



The universally applicable turntable

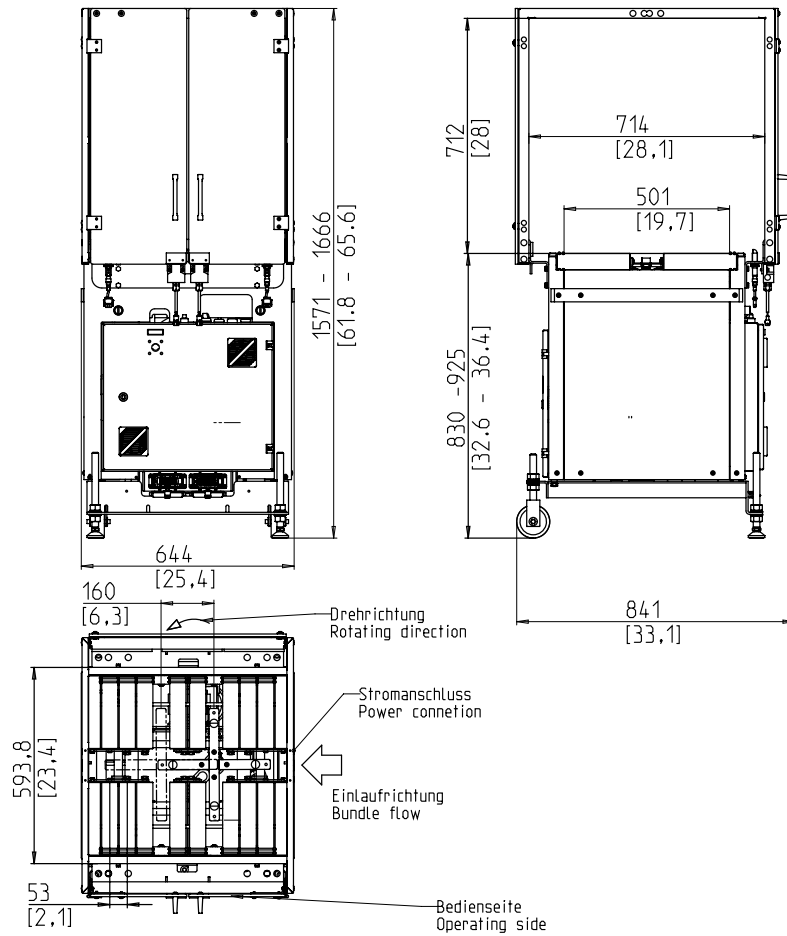


- Soft turn of the bundles
- High capacity
- Low maintenance
- Low wear

## EQUIPMENT:

- Upstream and downstream interlocks
- Power cable, length 3m
- Two plexidoors with safety switch
- Soft bundle turn can be activated
- Table height steplessly adjustable

# SMB V74



## TECHNICAL SPECIFICATION:

### CAPACITY:

Bundles/minute:	40
At table belt speed in m/s:	1

### BUNDLES:

Width in mm:	min. 240
Length in mm:	min. 240
Bundle diagonals in mm:	max. 500
Optional max.:	600
Weight in kg:	max. 25

### TRANSPORT SPEED:

m/s:	0,4 - 1,0
------	-----------

### POWER SUPPLY:

208-500V; 3 AC; 50/60Hz;  
Special voltages available on request  
TN and TT network

### POWER CONSUMPTION:

Total consumption approx. in kW:	0,6
----------------------------------	-----

### WEIGHT:

Total weight approx. in kg:	180
-----------------------------	-----

### OPERATING CONDITIONS:

Temperature range in °C [°F]:	+10 [50] - +40 [104]
-------------------------------	----------------------



**SMB SCHWEDE MASCHINENBAU GMBH**  
Markgrafenstraße 2 | D-95497 Goldkronach | Germany  
Tel.: +49 (0) 9273 / 982-201 | Fax.: +49 (0) 9273 / 982-100  
[www.smb.biz](http://www.smb.biz) | [sales@smb.biz](mailto:sales@smb.biz)